

# Bulletin of the Southern California Academy of Sciences

---

Volume 112 | Issue 1

Article 4

---

4-11-2013

COVER

Follow this and additional works at: <http://scholar.oxy.edu/scas>

---

## Recommended Citation

(2013) "cover," *Bulletin of the Southern California Academy of Sciences*: Vol. 112: Iss. 1.

Available at: <http://scholar.oxy.edu/scas/vol112/iss1/4>

This Cover is brought to you for free and open access by OxyScholar. It has been accepted for inclusion in Bulletin of the Southern California Academy of Sciences by an authorized administrator of OxyScholar. For more information, please contact [cdla@oxy.edu](mailto:cdla@oxy.edu).

CONTENTS

Growth, Development, and Reproduction in Gulf Corvina (*Cynoscion othonopterus*). Katie E. Gherard, Brad E. Erisman, Octavio Aburto-Oropeza, Kirsten Rowell, and Larry G. Allen ..... 1

Recent Mass Mortality of *Strongylocentrotus purpuratus* (Echinodermata: Echinoidea) at Malibu and a Review of Purple Sea Urchin Kills Elsewhere in California. Gordon Hendler ..... 19

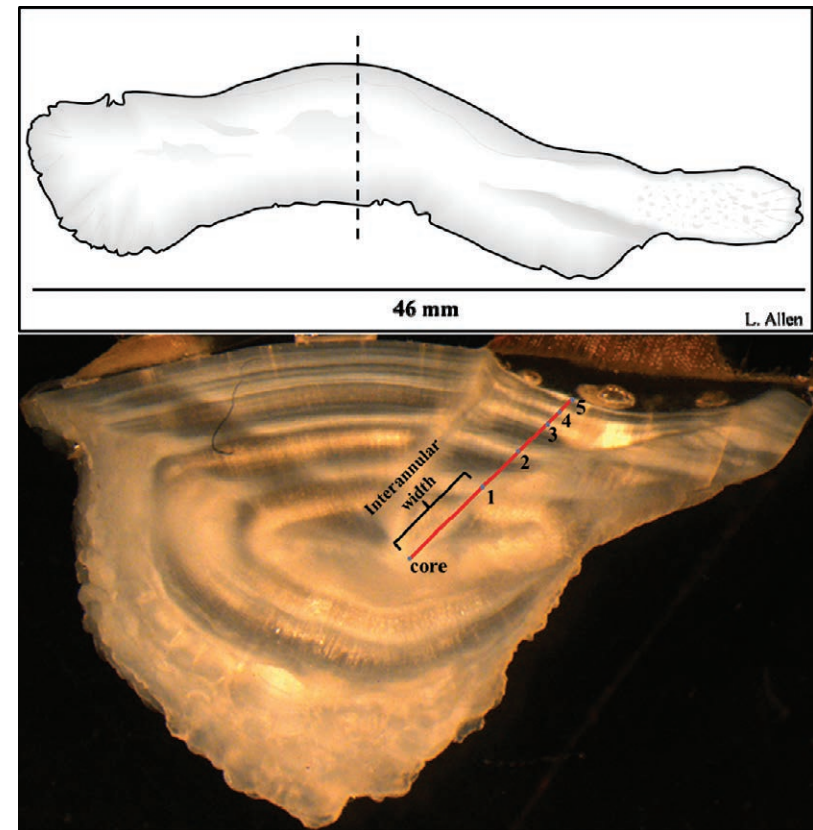
Review of the Purple Amole *Chlorogalum purpureum* (Agavaceae): a Threatened Plant in the Coast Ranges of Central California. Christopher P. Kofron, Connie Rutherford, Elizabeth R. Clark, Darlene Woodbury, Jody Olson, and Robert F. Holland ..... 38

SOUTHERN CALIFORNIA ACADEMY OF SCIENCES

BULLETIN

Volume 112

Number 1



Cover: Sagittal otoliths of Gulf corvina.

A112(1) 1-48 (2013)

April 2013

# Southern California Academy of Sciences

Founded 6 November 1891, incorporated 17 May 1907

© Southern California Academy of Sciences, 2013

## 2012-2013 OFFICERS

Julianne Kalman Passarelli, *President*  
Bengt Allen, *Vice-President*  
Edith Read, *Recording Secretary*  
Daniel Guthrie, *Corresponding Secretary*  
Ann Dalkey, *Treasurer*  
Daniel J. Pondella II, *Editor*  
Larry G. Allen, *Editor*

## ADVISORY COUNCIL

Jonathan Baskin, *Past President*  
John Roberts, *Past President*  
Robert Grove, *Past President*  
John H. Dorsey, *Past President*  
Ralph Appy, *Past President*

## BOARD OF DIRECTORS

2010–2013	2011–2014	2012–2015
Lisa Babilonia	David Ginsberg	Bengt Allen
Brad R. Blood	Gordon Hendler	Shelly Moore
Ann Dalkey	Andrea Murray	Ann Bull
Julianne Passarelli	Dan Guthrie	Dan Cooper
Edith Read	Gloria Takahashi	Mark Helvey

Membership is open to scholars in the fields of natural and social sciences, and to any person interested in the advancement of science. Dues for membership, changes of address, and requests for missing numbers lost in shipment should be addressed to: Southern California Academy of Sciences, the Natural History Museum of Los Angeles County, Exposition Park, Los Angeles, California 90007-4000.

Professional Members . . . . . \$60.00  
Student Members . . . . . 30.00  
Memberships in other categories are available on request.

Fellows: Elected by the Board of Directors for meritorious services.

The Bulletin is published three times each year by the Academy. Submissions of manuscripts for publication and associated guidelines is at SCASBULLETIN.ORG. All other communications should be addressed to the Southern California Academy of Sciences in care of the Natural History Museum of Los Angeles County, Exposition Park, Los Angeles, California 90007-4000.

Date of this issue 11 April 2013