

Bulletin of the Southern California Academy of Sciences

Volume 115 | Issue 1

Article 6

4-26-2016

COVERS

Follow this and additional works at: <http://scholar.oxy.edu/scas>

Recommended Citation

() "covers," *Bulletin of the Southern California Academy of Sciences*: Vol. 115: Iss. 1.
Available at: <http://scholar.oxy.edu/scas/vol115/iss1/6>

This Cover is brought to you for free and open access by OxyScholar. It has been accepted for inclusion in Bulletin of the Southern California Academy of Sciences by an authorized administrator of OxyScholar. For more information, please contact cdla@oxy.edu.

CONTENTS

The Return of the King of the Kelp Forest: Distribution, Abundance, and Biomass of Giant Sea Bass (*Stereolepis gigas*) off Santa Catalina Island, California, 2014–2015. Parker H. House, Brian L.F. Clark, and Larry G. Allen 1

Nudibranch Range Shifts Associated with the 2014 Warm Anomaly in the Northeast Pacific. Jeffrey H. R. Goddard, Nancy Treneman, William E. Pence, Douglas E. Mason, Phillip M. Dobry, Brenna Green, and Craig Hoover 15

Seed Collection and Germination Strategies for Common Wetland and Coastal Sage Scrub Species in Southern California. Michelle L. Barton, Ivan D. Medel, Karina K. Johnston, and Christine R. Whitcraft 41

Redescription of *Bathogyge grandis* Hansen, 1897 (Crustacea, Isopoda, Bopyridae) from Southern California with Erection of a New Subfamily, Bathygyginae. John C. Markham..... 72

The Reef Cornetfish, *Fistularia commersonii* Rüppell, 1838, New to the California Marine Fish Fauna. Milton S. Love..... 81

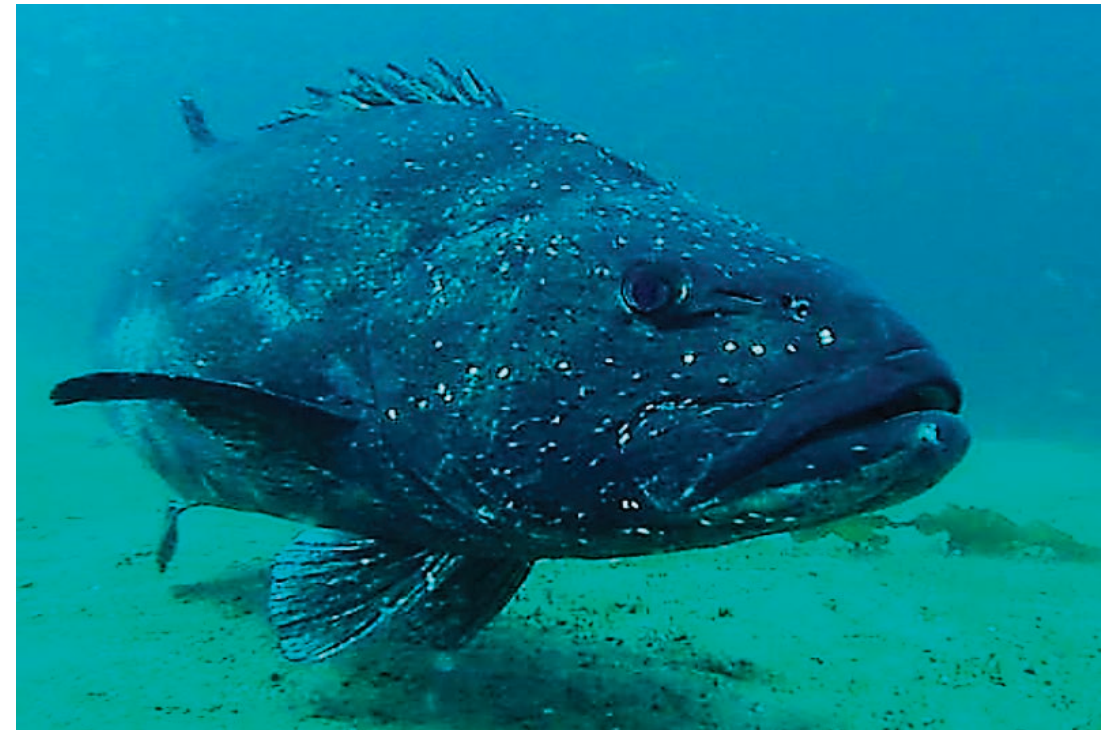
Cover: Giant Sea Bass, *Stereolepis gigas*, photo credit Parker House.

SOUTHERN CALIFORNIA ACADEMY OF SCIENCES

BULLETIN

Volume 115

Number 1



115(1) 1-84 (2016)

April 2016

Southern California Academy of Sciences

Founded 6 November 1891, incorporated 17 May 1907

© Southern California Academy of Sciences, 2016

2015–2016 OFFICERS

Julianne Kalman Passarelli, *President*

David Ginsburg, *Vice-President*

Edith Read, *Recording Secretary*

Ann Dalkey, *Treasurer*

Daniel J. Pondella II and Larry G. Allen, *Editors - Bulletin*

Brad R. Blood, *Newsletter*

Shelly Moore, *Webmaster*

ADVISORY COUNCIL

Jonathan Baskin, *Past President*

John Roberts, *Past President*

John H. Dorsey, *Past President*

Ralph Appy, *Past President*

Brad R. Blood, *Past President*

BOARD OF DIRECTORS

2013–2016

Ann Dalkey
Julianne K. Passarelli
Edith Read
Danny Tang
Lisa Collins

2014–2017

David Ginsburg
Gordon Hendler
Shana Goffredi
Tom Ford
Gloria Takahashi

2015–2018

Bengt Allen
Shelly Moore
Ann Bull
Kristy Forsgren
Karina Johnston



Membership is open to scholars in the fields of natural and social sciences, and to any person interested in the advancement of science. Dues for membership, changes of address, and requests for missing numbers lost in shipment should be addressed to: Southern California Academy of Sciences, the Natural History Museum of Los Angeles County, Exposition Park, Los Angeles, California 90007-4000.

Professional Members \$80.00
Student Members \$50.00
Memberships in other categories are available on request.

Fellows: Elected by the Board of Directors for meritorious services.

The Bulletin is published three times each year by the Academy. Submissions of manuscripts for publication and associated guidelines is at SCASBULLETIN.ORG. All other communications should be addressed to the Southern California Academy of Sciences in care of the Natural History Museum of Los Angeles County, Exposition Park, Los Angeles, California 90007-4000.

Date of this issue 26 April 2016

© This paper meets the requirements of ANSI/NISO Z39.48-1992 (Permanence of Paper).